



The Albert Halls Bolton

Presented by
Stephen Anderson
Head Chef

**Bolton
Council**

A little bit about us

- The Albert Hall Theatre – capacity 673
- Festival Hall – capacity 400
- Lancaster Suite – capacity 200
- Dido Suite – capacity 120
- Reception Room – capacity 60
- Banqueting Suite – capacity 100
- 6 Meeting Room – capacities 12 to 60
- Mere Hall – capacities 12 – 150
- Carnegie Hall - 150

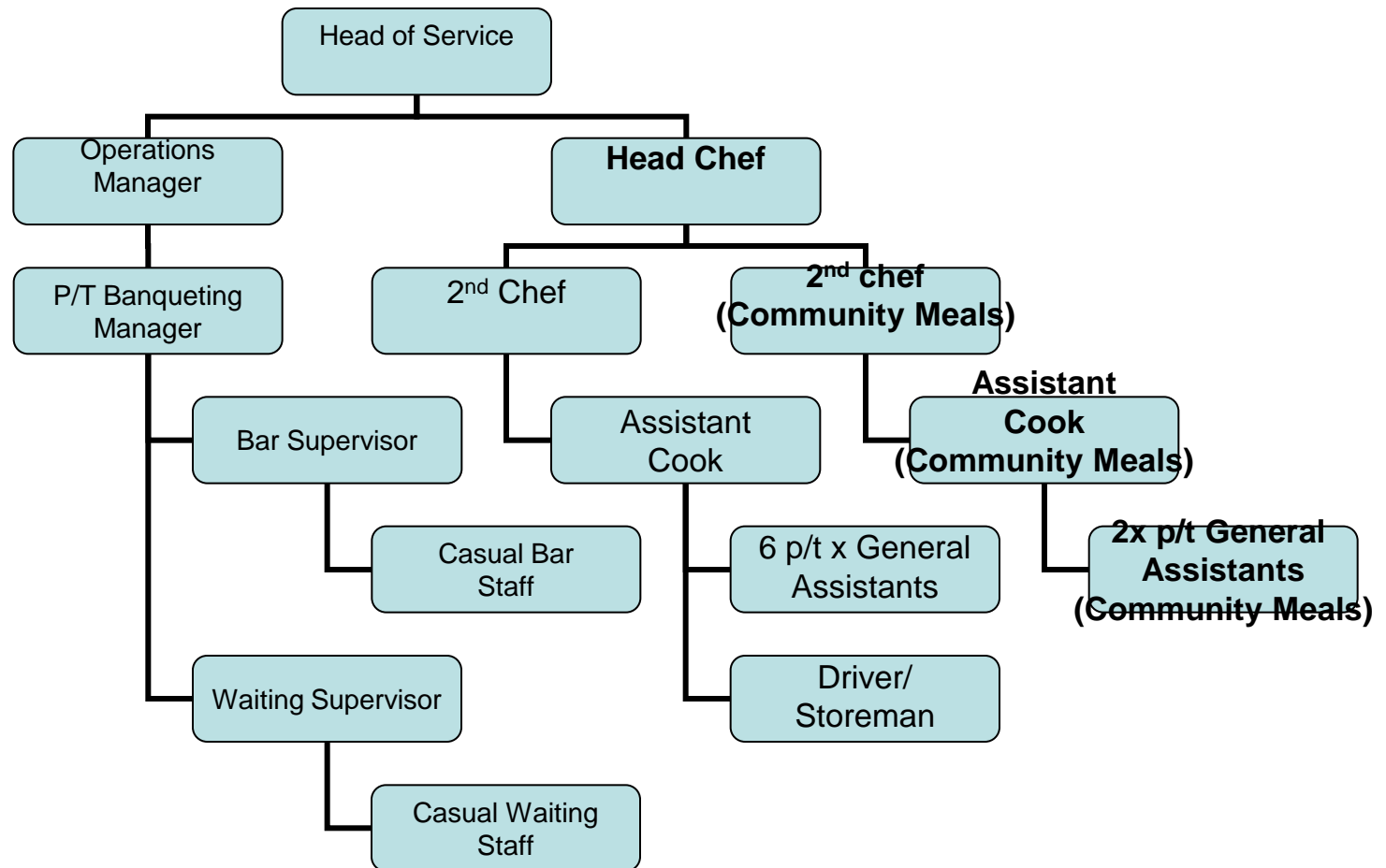


What we do?

- Shows, Concerts and Pantomimes
- External Hires
- Weddings – at 3 venues
- Banquets
- Seminars, Conferences etc
- Council Meetings
- External Meetings
- Dances
- Civic Dinners
- External Catering
- Members and Staff Restaurant – now open to the public
- Supply Provisions
- Supply Nurseries and the local College
- Bars
- Production of Community Meals – later this year



How we do it?



What do we provide?

- 36,234 Refreshments
- 2665 Working Lunches
- 33 Mayoral Dinners/Lunches
- 5 Civic Functions
- 52 Weddings
- 150 External Catering
- 320 days Nurseries/College
- 178 Bars



Services

- The Dido Restaurant
 - Opening Hours 8.15am – 2.00pm
 - Breakfast
 - Lunch
- Open to the public
- Annual Income £75,000



Services

- Hospitality Service

- has been replaced with self vending service
- working lunches/teas
- Annual Income £115,000

- External Catering

- provides buffet lunches to other venues including private companies
- Annual Income £25,000

- Civic Catering

- Mayoral Functions
- Civic Dinners



Services

- Function Catering

3 function venues (1 recently refurbished)

new package deal for wedding (includes room dressing)

new wedding brochure

wedding fair

Annual Income £140,000

- Bars

5 bars between 3 venues

Theatre Bar and Mobile Bar

Annual Income £130,000



Nurseries and College



Nurseries



Started as a loose arrangement for staff cover with one nursery

Current annual income £25,000



College

Provision of 120 meals per week

Current annual income approx £10,000



Future Services

- Production of Community Meals
- Starts June 2011
- 500 meals per day
- Cost including labour approx £1.20 per meal (£218,400)
- Target Annual income £327,600
- Annual surplus £109,200



Marketing

- Commercial Business
 - Wedding Fairs
 - Press Adverts
 - Word of Mouth
 - Website
 - Packages including Weddings, and Christmas
 - Competitor analysis



Financial Issues

- Overall run as a Commercial Business
- Expected to make a return to the Albert Halls in 2009/10 contributed over 38K
- Diversity of the service to bring in money/business
- Sustainability of the service





**THANK YOU FOR LISTENING
IF YOU HAVE ANY QUESTIONS
PLEASE DO NOT HESITATE TO ASK**

**Contact Details
Stephen Anderson
stephen.anderson@bolton.gov.uk**